

**⚠ WARNING** - ALL TROUBLESHOOTING SHOULD BE DONE BY A QUALIFIED PERSON. ALWAYS MAKE SURE THE INPUT POWER IS COMPLETELY DISCONNECTED BEFORE ATTEMPTING ANY TROUBLESHOOTING PROCEDURES. FAILURE TO DO SO CAN CAUSE EQUIPMENT DAMAGE, SERIOUS INJURY OR DEATH.

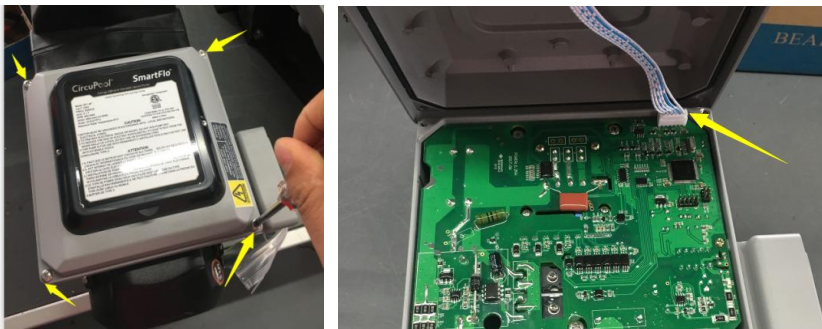
**E-01 and E-10 are caused by an overload. IMPORTANT:** verify the pump is disconnected from power before troubleshooting.

First, open pump lid, remove filter basket & check by hand if the motor rotates smoothly by turning impeller.

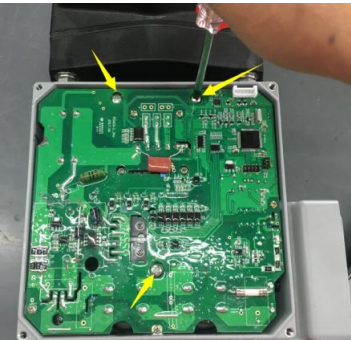
- If there is resistance to the rotation of the motor, check if the impeller and the guide sleeve are stuck. You may need to disassemble, check for debris, and refit parts ensuring proper alignment and assembly.
- If the motor rotates smoothly, go to next step.

Second, remove the pump's controller and follow the steps below.

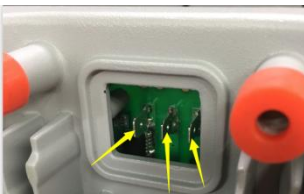
1. Ensure that all power has been removed from the pump for at least five minutes.
2. Remove the four screws on the top of the controller and unplug the cable.



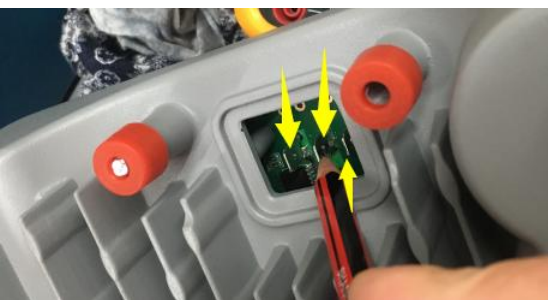
3. Remove the three screws connected to the controller and the motor and remove the controller.



4. Wipe the surface of the three tabs with a clean cloth.



5. Apply graphite using an ordinary pencil to cover the surface of the three connecting pieces. Then plug and unplug the connector on the motor several times.



6. Secure the three screws that connect the controller to the motor and plug in the cable. Secure the four screws on the top cover of the controller.
7. Reconnect the pump to power and run the pump.